

MOUNTAIN HERITAGE

The Gilmer County Genealogical Society, Inc.

September, 2024

Volume 12, Issue 3

Unleashing the Power of AI for Family History

All photographs are from
FamilySearch.org.

Rebecca Holt Amerson

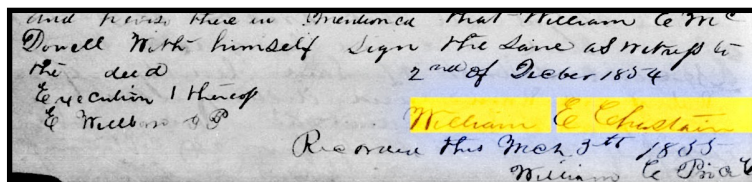
It feels like a miracle – having a computer read cursive documents when there are so many people today who can't read cursive! The release of the 1950 census records was the first time AI (artificial intelligence) was used to prepare those records for searching. Ancestry and FamilySearch partnered to take a tedious human process of indexing, one record at a time, and handed it over to computers and artificial intelligence. The plan was to let the computers do the initial indexing, to be followed by human verification. The results were astonishing, letting those of us waiting to explore it – for many of us our first census – in record time. An amazing success! This was just the beginning!

FamilySearch announced at Rootstech 2024 in early March they were going to use the power of AI to allow full text searching of old records written in long hand – some nice and neat and some that are barely discernable. It is an experiment that was begun with huge blocks of land and probate records that had never been indexed. The sheer volume of these records would need many years of volunteers' time to index but can now be indexed "on demand." Yes, it does feel like a miracle! What's more wonderful, access to these records is completely FREE!

100 million records are currently available in the full-text search pilot, with more on the way. FamilySearch hopes to eventually make all of their unindexed records searchable with the power of AI. To the original U.S. Land and Probate Records 1630-1975 that began this project, they have already added early US Voter's Lists, US Plantation Records 1700s-1865 and some international records from Mexico, Australia, and New Zealand.

Let me share some records I have found recently using AI for keyword searching of handwritten records in order to get to know and be successful using the new tool.

I have been working on two brick walls in my family tree. One of them is William E. Chastain 1820-1878, my 3Xggf, who raised his family here in Gilmer County. I am confident in that lineage but have not been able to verify his father. I have traced him back to the 1860 Census in Towns County using traditional sources. The new AI search located a deed in Rabun County in 1854 signed by a William E. Chastain! Now I have a new clue, a new place to look for William and his young family.



And here, there is mentioned that William E. Chastain
Donell with himself sign the same as with
the deed
Execution thereof
& witness
2nd of October 1854
William E. Chastain
Received this 2nd of October 1854
William E. Chastain

See *Unleashing the Power of AI for Family History*, page 2.



Unleashing the Power of AI for Family History

-continued-

I tried entering Protection into the search box – a place in Gilmer County rather than a name. I found this 1898 voter’s list listing the name of my great grandfather – John F. Rackley! The people in this section of the Voter’s Book represent Diamond, Pisgah, and Protection, small communities that once had post offices out what is now Big Creek Road. This is the Voter’s Oath they had to sign:

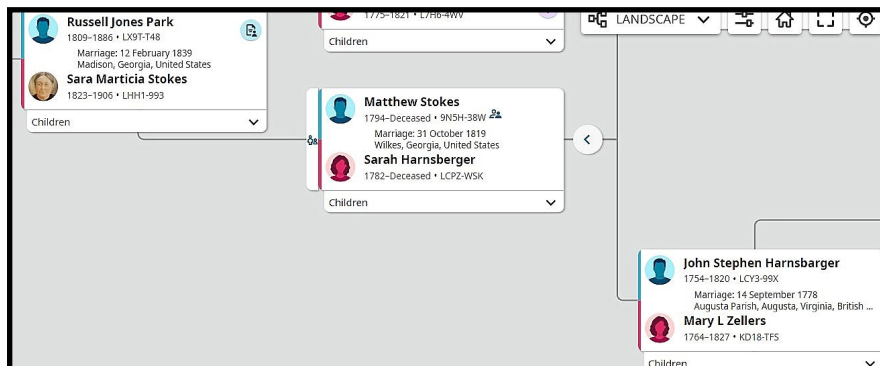
Form 1. Voters' Book, *Diamond* County, Georgia, 1898

NAME OF VOTER <small>To be written by himself</small>	Order of Voter	RESIDENCE		Ward or Dist.	Age	Occupation	REMARKS
		No.	STREET				
<i>Park County</i>			<i>Diamond 1841</i>	<i>22</i>			
<i>R Rackley John F</i>			<i>Pisgah Ga</i>	<i>38</i>			

“I do swear or affirm , that I am a citizen of the United States, that I am twenty - one years of age; that I have resided in this State for one year, and in this County for six months immediately preceding the date of this oath, that I have paid all taxes which, since the adoption of the Constitution of 1877, have been required of me, except taxes for this year, and that I am not disfranchised from voting by reason of any offense committed against the laws of the State.”

By the way, I scrolled through several of these pages, and noticed that only men were listed in the Voters’ Book. Women in Georgia would not get to vote in a national election until 1922!

As a member of the Daughters of the American Revolution (DAR), I needed to find proof of a generational connection between a mother and daughter on my path to proving a revolutionary soldier from Virginia. Proving women can be challenging using 19th century records. Using this new FamilySearch tool, I couldn’t believe it when I found three connections in a single document -- the will of my 5Xggm Mary Zellers Harnsbarger contained the names of my 4Xggm Sarah Stokes (her daughter) and my 3Xggm Marticia Stokes Park (her granddaughter) – I was blown away! I would never have known of the existence of that record without this AI tool. Thank you, FamilySearch, for helping me prove my Revolutionary War patriot John Stephen Harnsbarger!

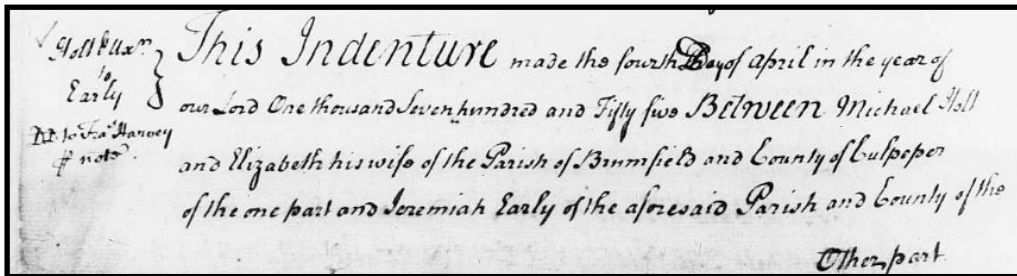




Unleashing the Power of AI for Family History

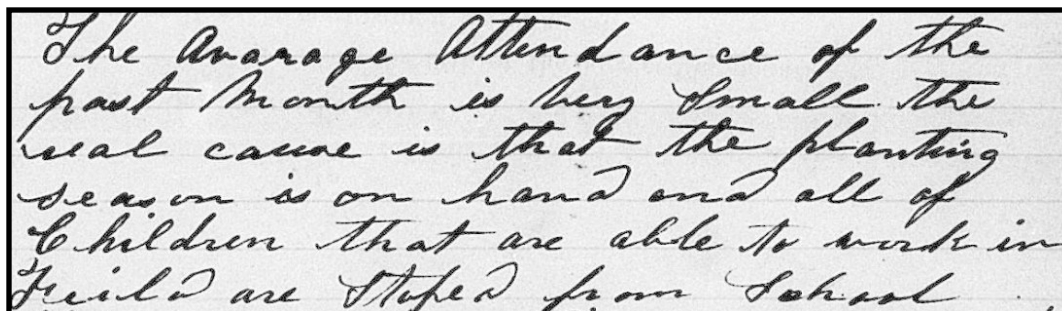
-continued-

My Holt immigrant ancestor came from Germany to Virginia in 1717. Michael Holt worked off an indenture from Governor Spotswood of Virginia and went on to raise his family on a 400 acre farm in Culpeper County, VA. I knew he moved his entire extended family to North Carolina and that Early Mountain Vineyards is located on his farm today. I was so excited to find the deed of sale from Michael Holt and "Elizabeth his wife" to Jeremiah Early dated 1755! The 400 acre farm was sold for 155 "pounds current money." Amazing!



One of the new record groups recently added to this project contains plantation records. I grew up on the coast in McIntosh County, GA and Sapelo Island is the barrier island off our coast. I found a report that was submitted by the school at Hanging Bull Plantation on Sapelo Island in 1866 following the civil war. The freed people had purchased land on Sapelo to be able to stay there and a black school was established on what was Hanging Bull Plantation. This is just a piece of the report for the month of March and a note of explanation.

REPORT FOR THE MONTH OF	
	<i>March</i>
Number of Days.	<i>13</i>
Number of Sessions.	<i>1</i>



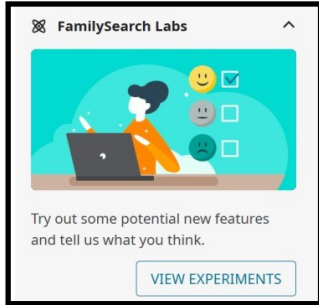
Did you have any trouble reading this cursive? AI transcribed the word in the center of the bottom row as *stoped*. Could it be a misspelling of *stopped*? Transcribing records is no easy job, even for this retired schoolteacher!



Unleashing the Power of AI for Family History

-continued-

Now I hope you are thinking “I’ve got to try this for myself!” Here are a few instructions to get you started.



To access these records, log-in to FamilySearch with your free account. From the home page, scroll down, looking on the right side of your screen for FamilySearch Labs. Click to **VIEW EXPERIMENTS**. You will now see **Expand your search with Full Text** and click to **Go To Experiment**. The search box is the first thing you see but remember to scroll down for additional information. There is a “how to” video as well as a growing list of the record sets in the project.

Here are some search tips going forward when looking for people in your family tree. Using quotation marks will search the name as an exact phrase like “William Ellington.” Searching names presents many challenges – spelling, initials, middle names, nicknames, titles like Rev, etc. If you are not getting the search results you need, try variations of the name in the search box.

If doing a search for the first person buried in the Ellijay City Cemetery, enter “William Ellington” in the search box. 1668 documents will be found on the results list. Now you need to filter by **PLACE**. At the top of the results list, click the Place button. Choosing United States of America will reduce the number of hits to 1634. Now click Georgia to filter by state reducing the number to 166. One final choice is county, so click Gilmer to arrive at your final results list of 14.



Now comes the fun for genealogy researchers – digging through the records! From the document previews, choose one that looks a possibility. Here is a sample probate record.

You are looking at the digitized record on the left and the full text transcript done by the computer on the right. Your search term “William Ellington” is highlighted in yellow on





Unleashing the Power of AI for Family History

-continued-

both to draw your eye to what you are looking for. Yes, the transcript on the right isn't perfect.....but it has gotten you to records you would never ever have found scrolling through unindexed records. Incredible! Use these results as *hints*. You will read the record yourself to determine its usefulness. It is simple to enlarge using the +. Another strategy is to use the arrows to take a look at the pages before and after for additional information.



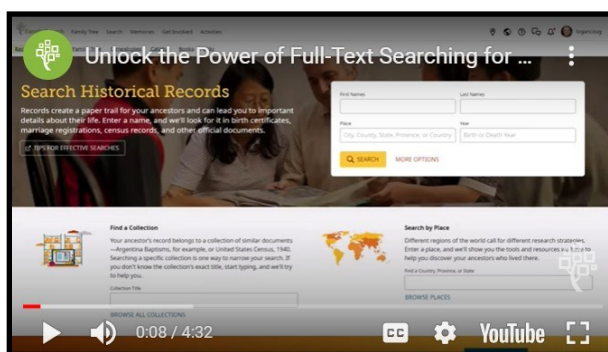
You can download this document to your computer as a .jpg file. Another research tip is to organize your files into folders, putting this file into your ELLINGTON folder. File naming is also very important. You want to be able to find your file and know what it contains. (ex) 1843 Gilmer Will Book orphan Salina Ellington. Something you may note from this record is that Gilmer's first historian, B. B. Quillian, served as her guardian! Both men are important early settlers of Gilmer County.

Are you ready to give this exciting new tool a try? This computer technology is new and still developing. Yes, some transcriptions may not be exactly right; however, much of it is right, and the tool is improving all the time. Artificial intelligence is finding its way into everyday life. I am so excited about the possibilities for family history. Keyword searching of handwritten records is now possible!

I would like to invite you to bring your laptop and join me in the Upstairs Community Meeting Room of the Gilmer County Library from 10:00 a.m.-12:00 noon on Saturday, September 28, 2024 to login and give it a try! (If you do not have a laptop, you can use your library card to check out a Google Chromebook, and then save your work to your personal thumb drive.) Let's join together to see what you can find!

<https://www.familysearch.org/search/full-text>

(Place cursor over above link, press Ctrl key while clicking to open FamilySearch.com.)

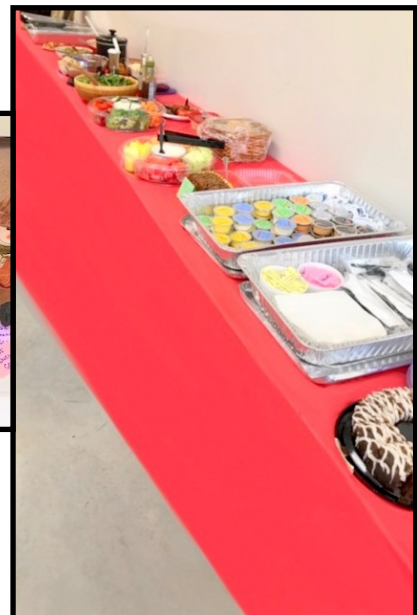




Third Quarter Highlights 2024



Brenda Cochran, Patricia Henson, Rebecca Burrell, and John Davis planned our annual GCGSI Fall Harvest Luncheon at 12:00 noon on Saturday, August 17, in the Gilmer County Library's Lower Level. This gave our members and their families an opportunity to visit and share great food, fellowship, and fun with one another.



Photos: Rebecca Burrell and Barbara J. Dover



Third Quarter Highlights 2024
-continued-



Left to Right: Patricia Henson; Brenda Cochran



Left to Right: Erin Brandy; Lydia Bassetti; Rebecca Burrell; Levi Haire



Left to Right: Tina Peavy; Sara Gagnon; Dolle Hunt Reeves; George McClellan; Ryder Morales



Left to Right: Beverly Ratcliff; Rebecca Holt Amerson; Susan Noles; Donna Lehr



Left to Right: Georga McClellan; Jimmy Cochran; Anita Davis Summers; Glenda Garland



Left to Right: John Davis; Charlotte Davis; Mary Jones; Willard Jones

See **Third Quarter Highlights 2024**, page 8.



Third Quarter Highlights 2024
-continued-



(Photos clockwise and/or left to right:) **1** - Beverly Ratcliff & Patricia Henson and their fancy pants; **2** - Levi Haire; Charlotte Davis; Mary Jones; Willard Jones; Donna Lehr; Susan Noles; Lydia Bassetti; Erin Brandy; Rebecca Holt Amerson; **3** - Patricia Henson & Barbara J. Dover awarding door prizes; **4** - Sara Gagnon; Beverly Ratcliff; Jimmy Cochran; Dolle Hunt Reeves; Brenda Cochran; Anita Davis Summers; George McClellan; Glenda Garland; **5** - Rebecca Holt Amerson; Erin Brandy; Susan Noles; Donna Lehr; Lydia Bassetti; Willard Jones; Levi Haire



Gold Star Heroes Buried in Gilmer County WWI, WWII, Korea, and Vietnam

Susan O. Noles



**Poor is the nation that has no heroes,
But poorer still is the nation that having heroes,
Fail to remember and honor them.
- Cicero -**

For the past two years, I have been working with local DAR members to honor the Gold Star Heroes buried in Gilmer County. There are 31. We have located the graves, cleaned the markers, placed flags, and adopted each one with the responsibility of taking care of each grave. This includes cleaning the graves and placing flowers, so they are remembered and honored.

When this started, I made a book, now located in the Gilmer County Library, with before and after pictures of the markers. I would like to add more pictures of the Gold Star Heroes. Since these were Gilmer County men, I am asking for your help in locating pictures and articles of interest for the following soldiers:

WWI: Pvt. William Charlie Boen (Nine Mile Cemetery)
Pvt. Ira D. Cochran (New Liberty Church Cemetery)
Pvt. Thomas C. Hensley (Pleasant Grove Bapt. Church Cemetery)
Pvt. Frank Holt (Jarrett Cemetery)
Bandmaster James Waldo Kirby (Ellijay City Cemetery)
Pvt. Elbert F. Weaver (Mt. Zion Church Cemetery)

WWII: PFC Erastus Allen (Boardtown Church of Christ Cemetery)
Pvt. Ensley Leeman Fowler (Macedonia Bapt. Church Cemetery)
Pvt. Roy J. Smith (Turniptown Bapt. Church Cemetery)

Korea: Cpl. Frank Gregg (Crossroads Bapt. Church Cemetery)

Please send info and pictures to: **Susannoles12951@ gmail.com**.



Gilmer County, Apple Capital of Georgia

Barbara J. Dover

Are you sick and tired of seeing and hearing IYKYK (If you know, you know) in ads, on Social Media, and basically everywhere? Yep, me too, although I must admit I first thought it had something to do with the zipper manufacturer YKK or the fashion revival of Y2K clothing. But clichés come and go. It is what it is. (Yuck, another overused and meaningless saying!) Anywho, we know and we know, and it goes without saying that our little neck of the woods is known for its apple production. So much so that Gilmer County holds the crown as the Apple Capital of Georgia, with the concentrated location of apple orchards on Georgia SR 52 East adopting the moniker “Apple Alley,” and the annual celebration of the Georgia Apple Festival that has been held for all but one of the past 53 years.

John Clayton was one of the earliest orchardists in Gilmer County. In 1906, he planted the first commercial apple orchard in Gilmer County. At the State College of Agriculture, in New York, he took first prize in 1913 for his crop of apples. He also took top honors at Georgia’s county fairs for his apples. By 1926 he had over 5,000 apple trees; his top varieties being Winesap, Rome Beauty, and Ben Davis. He tested around 70 species to learn which ones would grow best in the climate and soil of Gilmer County. He spent many days mentoring others in the science of fruit growing prior to his passing in 1932.

Other apple orchards were established in Gilmer County during the 1920’s and 1930’s, with many remaining productive today. The Hudson, Penland, Reece, Stembidge, Pritchett, Futch, Aaron, and Sellers family names are renowned for their orchards, some planted over a century ago. Most have their own farm stores with many different varieties of apples available during the harvest season of late July to December. Some stores remain open year-round, providing other fruits and vegetables as well as baked goods and preserves. The beautiful scenery of this area which remains relatively rural, the availability of rental properties, and outdoor recreational activities offer a great escape for visitors, especially during the often cooler fall months which coincide with the apple season. Apple orchards of Gilmer County no longer must rely only on commercial brokerage of their fruit to remain viable, but now have agritourism as a reliable source of income.

As early as the late 1800’s, people from cities often sought escape from the summer heat to visit farms owned by relatives; and later, with the use of the automobile in the 1930’s and 1940’s, the stresses of The Great Depression and WWII required the same type of escape. Demands for rural recreation led to widespread interest in horseback riding, farm petting zoos, and farm nostalgia during the 1960’s and 1970’s. In the 1980’s and 1990’s, farm vacations, bed-and-breakfasts, commercial farm tours, and u-pick events became



Gilmer County, Apple Capital of Georgia
-continued-

popular, but were then experienced by families that were generations apart from the farm-owning relatives of the past. Today's agritourism not only provides farmers with the capital to make a living and sustain the family farm but also provides the consumers/tourists with the opportunity to become more connected with the sources of their food.

Over the next couple of pages, I will share more information about apples: the sources of the varieties' names, the varieties produced in Gilmer County, and the Gilmer County sources of those varieties. These are a variety of things you may not know, things you may know, and things you now know but didn't know before now. You can share this information with others so they will know. It's not on a need to know basis but might be good to know. Just know that Gilmer County produces delicious apples, not just Red Delicious and Golden Delicious, but many more!

Gilmer County, Georgia's Apple Varieties and Information

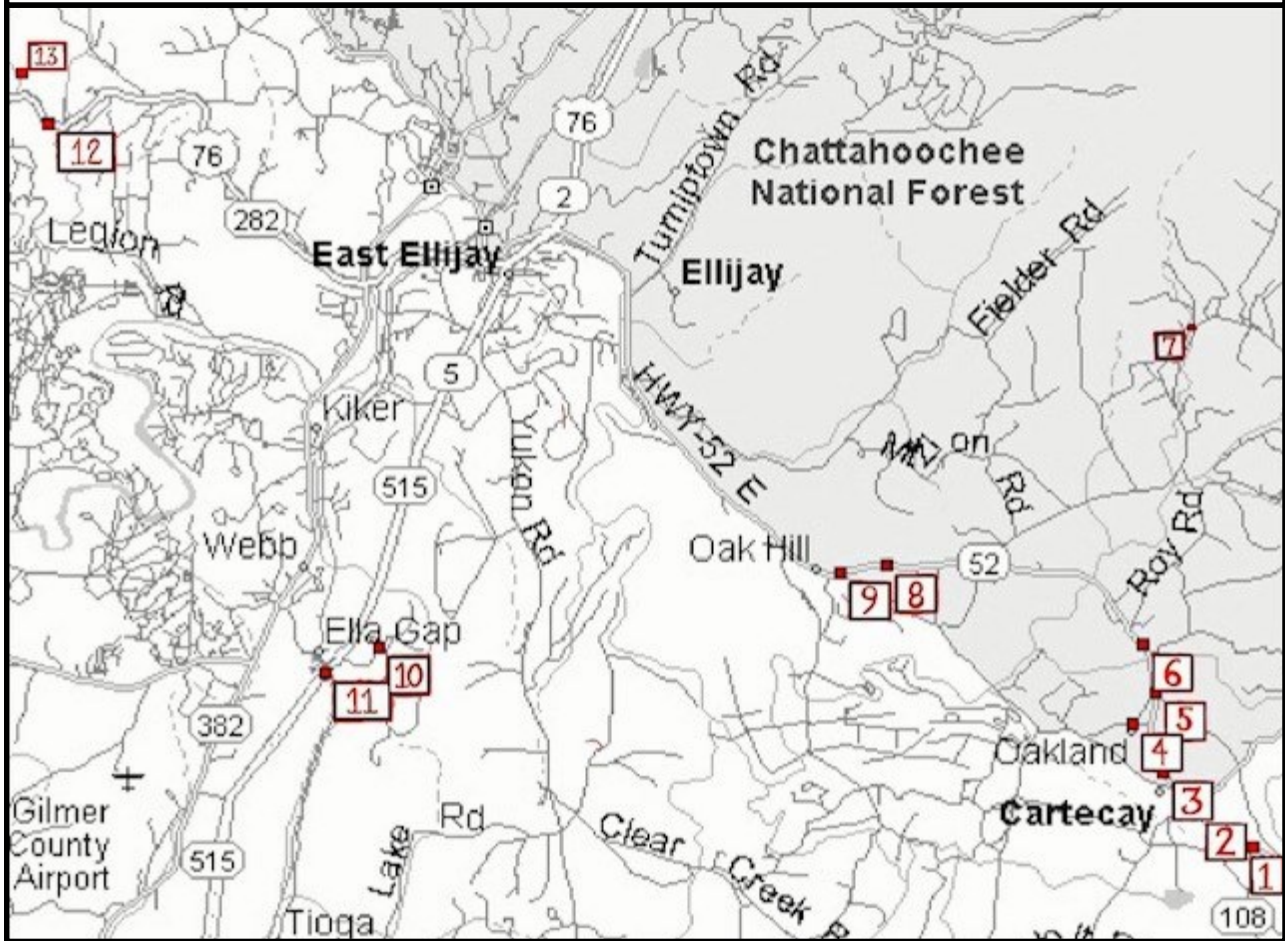
APPLE VARIETIES	HARVEST DATES	EATING	BAKING	CHARACTERISTICS	FLAVOR/TEXTURE
Ambrosia	Mid-September	Excellent	Good	Light red & yellow	Sweet, firm, crisp
Arkansas Black	Mid-October	Good	Good	Black, dark red	Very hard
Cameo	Mid-September	Excellent	Excellent	Reddish-brown, Vertical stripes	Mild, crisp
Crimson Crisp	Early October	Excellent	Excellent	Red	Sweet, sharp
Detroit Red	Early August	Poor	Fair	Red, chunky	Mellow, mild
Enterprise	Late September	Good	Excellent	Red, firm, juicy	Semi-sweet, firm
Evercrisp	Mid-October	Excellent	Excellent	Red	Crunchy, firm, sweet
Fuji	Mid-October	Excellent	Fair	Pinkish-red, firm. Juicy	Sweet, firm
Gala	Mid-August	Excellent	Excellent	Red, yellow	Sweet, crisp
Golden Delicious	Early September	Excellent	Excellent	Yellow, cooks up	Rich, sweet, crisp
Golden Supreme	Early August	Good	Excellent	Vibrant Yellow, cooks up	Mild, firm
Granny Smith	Early October	Excellent	Excellent	Green	Sour, hard, crisp
Honey Crisp	Mid-September	Excellent	Fair	Reddish-orange	Sweet, soft
Jonagold	Early September	Excellent	Excellent	Reddish-yellow, cross between Jonathan & Golden	Rich, sweet, crisp
Mutsu	Mid-September	Excellent	Good	Greenish-yellow, cross between Granny Smith & Golden	Juicy, semi-sweet, crisp
Pink Lady	Mid to late October	Excellent	Excellent	Reddish-pink	Tart, firm
Pritchett Golden	Early October	Excellent	Excellent	Small, yellow, firm	Firm & sweet
Red Delicious	Early September	Excellent	Not recommended	Red, American eating favorite	Rich, sweet
Rome Beauty	Late September	Good	Excellent	Red, juicy	Mild, crisp
September Wonder	Early to mid-September	Excellent	Fair	Reddish pink	Sweet, juicy, crisp
Staymen Winesap	Early October	Excellent	Excellent	Dark red, stripes	Tart, juicy, crisp
Suncrisp	Early September	Excellent	Excellent	Yellow-orange	Tart, firm, crisp
Winecrisp	Mid to late October	Excellent	Excellent	Red, juicy	Sweet, tart
Yates	Mid to Late October	Good	Good	Red Striped, small in size	Juicy, semi-sweet, crisp

Chart adapted from www.redapplebarn.com.



Gilmer County, Apple Capital of Georgia
-continued-

Gilmer County, Georgia's Orchards and Farm Markets



Map: www.pickyourown.org

The above annotated map shows the locations of the Gilmer County Orchards and Farm Markets and the index offers more information about them. Some of the markets and orchards are no longer open, but are provided here for a historic perspective of the number of them that have populated Gilmer County. The map's numbers are from east to west.



1. Hillcrest Orchards

9696 Highway 52 East
East Ellijay, GA 30536
applelan@ellijay.com/706-273-3838/



*U-pick; mini golf; wagon rides; cow-milking; swimming pig races; moonshine & apple museums; apple tree maze



Gilmer County, Apple Capital of Georgia
-continued-

Gilmer County, Georgia's Orchards and Farm Markets
-continued-

2. B. J. Reece Orchards

9131 Highway 52 East
East Ellijay GA 30536
706-276-3048
reeceorchards.com/reeceorchards@ellijay.com/
*U-pick apples; wagon rides; petting farm; farm market & bakery



3. Mack Aaron's Apple House

8955 Highway 52 East
East Ellijay, GA 30536
706-273-3600
mackaaronapplehouse@gmail.com/
mackaaronapplehouse.com
Farm market & bakery



4. Aaron Family Orchards

8350 Highway 52 East
Ellijay, GA 30536
706-273-3180
aaronfamilyorchards.com/sales@aaronfamilyorchards.com
Farm market & bakery; canned goods; u-pick flowers



5. Hudson's Apple House

8036 Highway 52 East
Ellijay, GA 30536
gafarmtrail.com/listing/hudsons-apple-house
***Permanently closed.**



6. Sellers' Orchard

255 Parks Drive
Ellijay, GA 30536
706-273-3026
***Permanently closed.**



7. Stover Mountain Orchard


3709 Big Creek Road
Ellijay, GA 30536
706-276-2512
*Organic apple farm; by appointment only



Gilmer County, Apple Capital of Georgia
-continued-

Gilmer County, Georgia's Orchards and Farm Markets
-continued-

8. R & A Orchards

5505 Highway 52 East
Ellijay, GA 30536
706-273-3821
randaorchards.com/shoprandaorchards@gmail.com 
U-pick apples & flowers; wagon rides; farm market; café; bakery



9. Oak Hill Orchard
4986 Highway 52 East
Ellijay, GA 30536
***Permanently closed.**


10. Panorama Orchards & Farm Market

P. O. Box 157
East Ellijay, GA 30539
706-276-3813
panoramaorchards.com/ 
*Farm market; bakery; canned goods; apples not grown locally anymore

63 Talona Mountain Road
Ellijay, GA 30540



11. Penland Orchards (515 Location)

41 Talona Mountain Road
Ellijay, GA 30540
706-635-5110 
penlandorchards.com/penlandorchards@gmail.com
*Farm market; fresh apple cider and fruit slushies

12. Red Apple Barn

3379 Tails Creek Road
Ellijay, GA 30540
706-635-5898
redapplebarn.com/apples@redapplebarn.com 
U-pick apples, flowers, pumpkins; farm tours



13. Penland Orchards (SR 282 Location)

7678 Tails Creek Road
Ellijay, GA 30540
706-635-5100 
penlandorchards.com/penlandorchards@gmail.com
Baked & canned goods; farm market; peaches when in season



Gilmer County, Apple Capital of Georgia -continued-

How do you like them apples?

The etymologies behind thirty-two apple cultivar names

Twitter: @etymology_nerd
Instagram: @etymologynerd



Ambrosia
Named in 1987 after the "food of the gods" in Ancient Greek mythology. Meant to evoke its sweet flavor.



Baldwin
Named after Revolutionary War colonel Loammi Baldwin, who helped spread the fruit. Usually known as the *Becker Apple*.



Braeburn
First commercially cultivated in the Braeburn Orchards in New Zealand in 1952, after which it was named.



Cameo
Originally called *Carusel* apples but renamed for copyright reasons in 2002. Exact explanation unknown.



Cortland
After Cortland County in New York State, which is in turn named after former lieutenant governor Pieter Van Cortlandt.



Cox's Orange Pippin
First grown by English amateur horticulturalist Richard Cox in 1825. Pippin means "an apple grown from seed".



Crispapple
Nothing to do with actual crabs. The term first appeared as *crabbe* in the mid-1400s and is likely from Old Norse.



Empire
Developed in Cornell University's apple breeding program and named in homage to New York's nickname, "The Empire State".



Envy
Originally named *Solara*. The trademarked name *Envy* was a marketing decision to make it seem superior to other apples.



Fuji
Named after the city of Fujisaki in the Aomori prefecture of Northern Japan, where the fruit was developed in the 1930s.



Golden Delicious
Originally *Muller's Yellow Seedling*, but renamed by the Stark Brothers Nurseries to market it with *Red Delicious*.



Granny Smith
Named in honor of Maria Ann Smith, an actual grandmother from Australia who cultivated the variant in the late 1860s.



Honeycrisp
Honey alludes to how it came from the *Honeygold* apple and *crisp* just refers to the texture. Also marketed as *Honeycrunch*.



Idared
A portmanteau of Idaho (the state where it was developed in 1942) and red, which just refers to the color of its skin.



Jazz
A trademarked name chosen by apple marketer ENZA to evoke the sensory experience of the music genre.



Jonagold
Created in New York in the 1940s as a cross-breed of the Jonathan and Golden Delicious apple varieties.



Jonathan
Named by the president of the Albany Horticultural Society after Jonathan Habroock, who introduced him to the apple.



Macoun
Named in 1923 after pomologist W. T. Macoun, who oversaw several horticultural research stations in Canada.



McIntosh
In honor of farmer John McIntosh, who discovered the apple. The *Macintosh* computer was named after it.



Mutsu
After the Mutsu province in Japan, where it was first cultivated. Renamed *Crispin* in the US and UK for marketing.



Northern Spy
Uncertain origin, but possibly a corruption of the phrase *Northern Pie*. Popularized by an 1830 novel of that name.



Opal
A trademarked name decided on by FirstFruits Marketing meant to evoke the similarly-colored gemstones.



Pacific Rose
An ENZA marketing name for the *Scarlet* cultivar. Refers to New Zealand, where it was developed, and its rosy color.



Pink Lady
Named after a cocktail in the 1951 book *The Cruise of the Nicholas Montezut* - the developer's favorite novel.



Red Delicious
Originally called *Hawkeye*, then *Stark Delicious*. Renamed in 1914 to be marketed with the Golden Delicious variety.



Rome
First cultivated in the township of Rome, Ohio. That's either named after the Italian capital or another town in New York.



Royal Gala
Named in honor of a visit Queen Elizabeth II made to New Zealand, where she was very impressed with the apple.



Snap Dragon
A trademarked name chosen by Cornell scientists to evoke a "monster crunch". Known as *N77* in testing.



Sonya
The marketing name for the *Nivson* variety, after the 10-year-old daughter of the guy who first cultivated it.



SugarBee
So named because it was a sweet apple that was created out of cross-pollination by honeybees.



Sweetango
A marketing decision by the University of Minnesota's apple breeding program that brings to mind exotic tastiness.



Winter Banann
The name refers to its banana-like color and taste, and to how it can be grown during the winter in warmer climates.



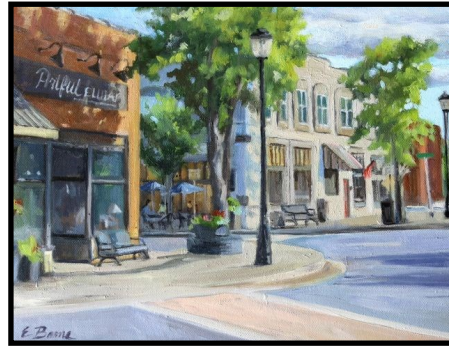
Photos: Barbara J. Dover



GCGSI September-December 2024 Programs and Events

All dates and times are subject to change.

- **Sunday, September 8, 2024** Event: Gilmer Arts Exhibit Reception for *Gilmer County Heritage Exhibit (3:00 – 5:00 pm. in Gilmer Arts Gallery)* Exhibit runs through October.

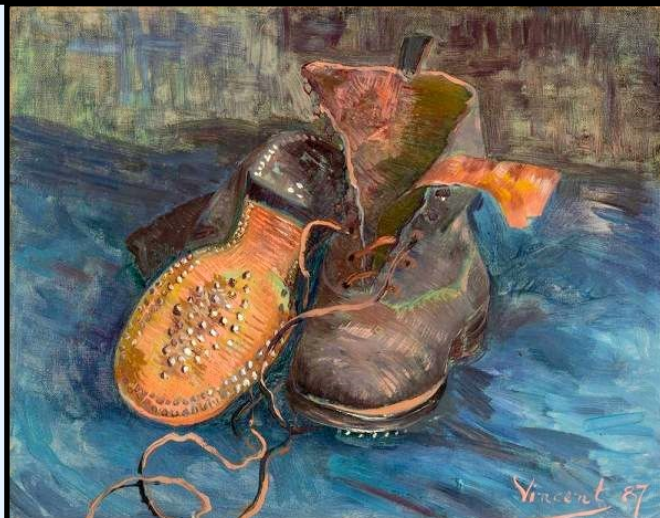


Ellijay Main Street created by artist Elizabeth Bame.

- **Saturday, September 21, 2024** Meeting Program: Patsy Payne Benson will speak about *Whitestone, Georgia: History and Memories (2:00 p.m. in Gilmer County Library Lower Level Meeting Room)*
- **Saturday, September 28, 2024** Workshop: Rebecca Holt Amerson will facilitate a workshop **Unleashing the Power of AI for Family History. (10:00 a.m. - 12:00 noon in Gilmer County Library Upstairs Community Meeting Room)** Bring your laptop for hands-on instructions. If you do not have a laptop, bring your library card to check out a Google Chromebook and bring a thumb drive to save your work.
- **Saturday, October 19, 2024 (Drop-In Meeting)** Program: Books published by GCGSI will be discussed and available for purchase at this “drop-in meeting” called *The Books of GCGSI (2:00-3:00 p.m. in Gilmer County Library Lower Level Meeting Room)*
- **Saturday, November 2** Event: The Friends of Harrison Park are sponsoring a *Heritage Day* at Harrison Park.
-
- **Saturday, November 16, 2024** Meeting Program: A panel of members will speak about *Resting in Peace: Revelations through Restoration of Gilmer County Cemeteries (2:00 p.m. in Gilmer County Library Lower Level Meeting Room)* Susan Noles and Jennifer Anderson will share information about the transformation of Rose Cemetery. Beverly Ratcliff and Rebecca Amerson will discuss the work at the Ellijay Cemetery and other local cemeteries. ***This meeting will also include the Election and Appointment of 2025 GCGSI Officers and Board Chairpersons.**
- **Not sure when in November** Event: Design and Decoration of Tree for Gilmer County’s Annual Library Festival of Trees **Date and Theme TBD**
- **Saturday, December 14, 2024 (CHANGE in Regular Meeting Date to 2nd Saturday of the Month)** Meeting/Event: Holiday Luncheon for GCGSI members and their family members and/or guests. **Holiday Luncheon and Installation of 2025 GCGSI Officers and Board (12:00 noon in Gilmer County Library Lower Level Meeting Room)**



Fourth Quarter Bulletin Board



A Pair of Boots (1887)
Vincent van Gogh (Dutch 1853-1890)

September 2024

- Monday, September 2 - Labor Day
- Sunday, September 8 - Gilmer Arts Exhibit Reception
Gilmer County Heritage
Gilmer Arts Gallery - 3:00-5:00 p.m.
The exhibit will be available for viewing during gallery hours throughout September and October.
- Saturday, September 21 - GCGSI Monthly Meeting
Whitestone, Georgia: History and Memories
Speaker: Patsy Payne Benson, author
Gilmer County Library Lower Level - 2:00 p.m.
- Saturday, September 28 - GCGSI Workshop
Unleashing the Power of AI for Family History
Facilitator: Rebecca Holt Amerson
Gilmer County Library Upstairs Meeting Room
10:00 am. - 12:00 noon
Bring your laptop for hands-on instruction.
If you do not have a laptop, bring your library card to check out a Google Chromebook and bring a thumb drive to save your work.

2024 GCGSI Officers and Committee Chairpersons

President - John Davis
Vice President and Program, Publication, & Publicity Committees' Chairperson - Barbara J. Dover
Corresponding Secretary & Historian - Rebecca Burrell
Recording Secretary - Anita Summers
Treasurer & Membership Committee Chairperson - Susan Noles
First Families of Gilmer County Committee Co-Chairpersons - Eurilla Hyatt and Patricia Henson
Events Committee Chairperson - Linda Womack

October 2024

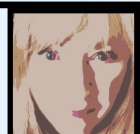
- Saturday, October 19 - GCGSI Drop-In Meeting
The Books of GCGSI
Books published by GCGSI will be discussed and available for purchase.
This is an informational informal gathering only.
Gilmer County Library Lower Level - 2:00 p.m.

- Thursday, October 31 - Halloween

November 2024

- Saturday, November 2 - FOHP Event
Heritage Day
Harrison Park - 10:00 a.m.-5:00 p.m.
- Sunday, November 3 - Daylight Savings Time Ends
- Tuesday, November 5 - Election Day
- Monday, November 11 - Veterans' Day
- Saturday, November 16 - GCGSI Monthly Meeting
Election of Officers and Board Members
Resting in Peace: Revelations through Restoration of Gilmer County Cemeteries
Panel: Susan Noles, Jennifer Anderson, Beverly Ratcliff, Rebecca Holt Amerson
Gilmer County Library Lower Level - 2:00
- November Date TBD: GCGSI Decoration of Tree
Festival of Trees
Gilmer County Library
- Thursday, November 28 - Thanksgiving

Mountain Heritage Newsletter
 Published by Barbara J. Dover
 Gilmer County Genealogical Society, Inc.
 Vice President and Program, Publications, and
 Publicity Committees' Chairperson




The Gilmer County Genealogical Society, Inc.
P. O. Box 919
Ellijay, GA 30540



The Gilmer County Genealogical Society, Inc.

Page 18

The Gilmer County Genealogical Society, Inc.
P. O. Box 919
Ellijay, GA 30540

We're online! 
www.gcgisi.org
Contact email: gilmergenealogy@gmail.com

What Is Available Online?

- GCGSI Membership
- First Families Application
- Genealogical Links
- Officers and Chairpersons
- Book Order Forms
- 1834 and 1840 Census
- Contact Information
- GCGSI Newsletters

